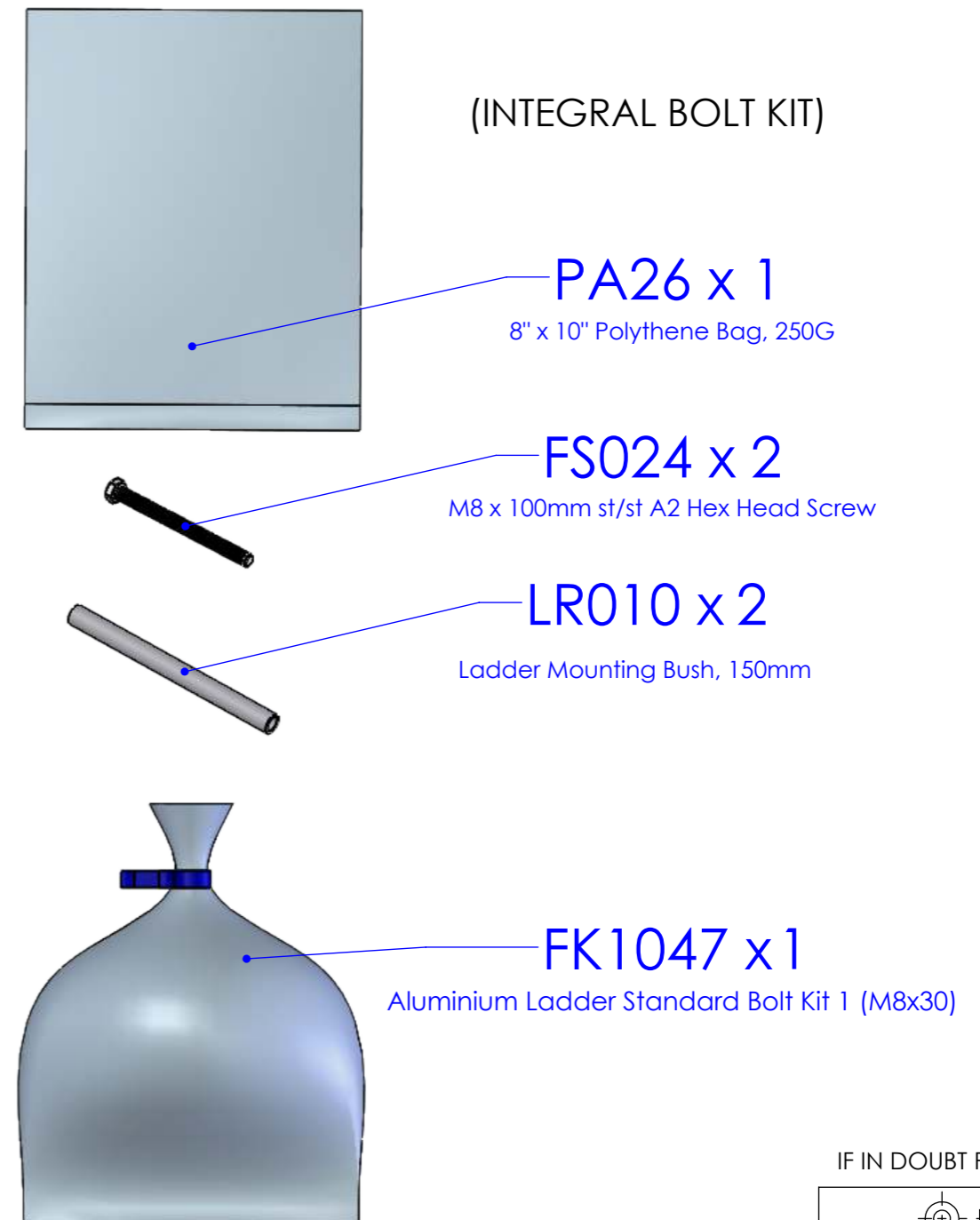
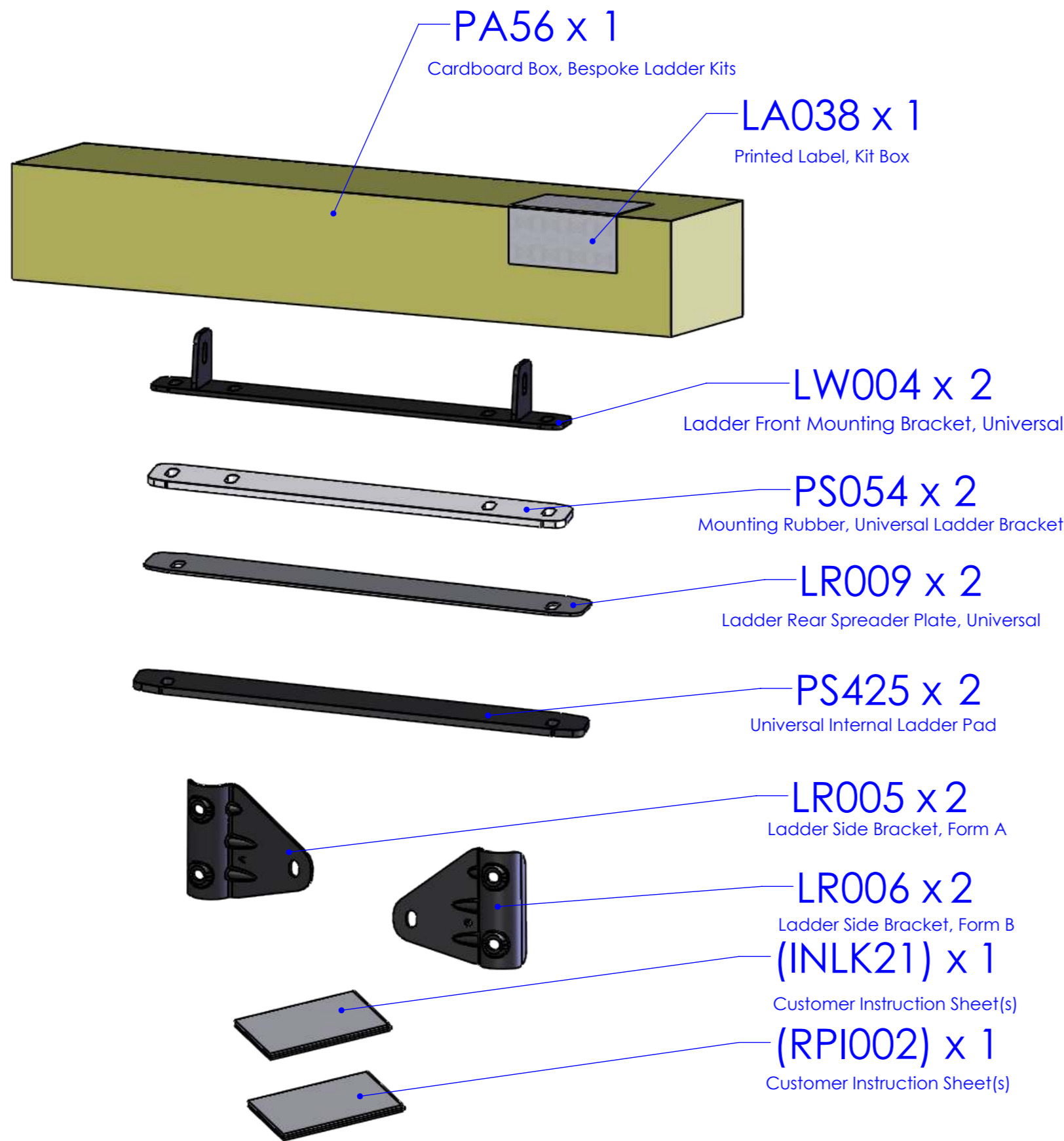


| ISSUE: | DRAWN BY: | CHECKED BY: | CRF NO: | DATE: | DESCRIPTION: |
|--------|-----------|-------------|---------|----------|----------------------------------|
| a | JL | KB | 2189 | 29/07/19 | Aluminium ladder - LK01 variant. |
| | | | | | |
| | | | | | |
| | | | | | |

Note: First pack Integral Bolt Kit into Plastic Bag, then pack this Bag with the main Kit (Cardboard Box). Pack loose space in box with waste plastic.



MATING PARTS: n/a



| | | | |
|--|--|----------------|------------------------------------|
| DRAWING NO: LK21 (1 of 9) | DESCRIPTION: Aluminium Ladder Fitting Kit, Universal | | DESIGNED BY: J.Lowe 29/07/19 |
| MATERIAL SIZE: n/a | MATERIAL SPEC: n/a | FINISH: n/a | WEIGHT: 3.42Kg |
| © NOTE: This drawing is the property of Rhino Products Ltd and must not be used or copied without written consent. The Rhino Products name and logo must remain clearly visible in any reproduction. | | | |

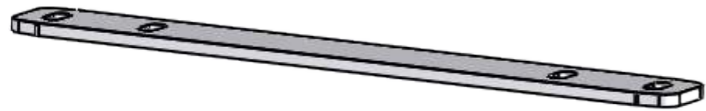
IF IN DOUBT PLEASE ASK

| | |
|---|------------------|
| THIRD ANGLE PROJECTION | |
| UNLESS OTHERWISE SPECIFIED: DIMENSIONS ARE IN MM | |
| 0.00 | ±0.2 |
| 0.0 | ±0.5 |
| ANG | ±0.5° |
| DERIVED DIMENSIONS SHOWN IN BRACKETS | |
| <F> - CRITICAL FIT DIMENSION | |
| <S> - SAFETY CRITICAL DIMENSION | |
| DEBURR AND BREAK ALL SHARP EDGES | |
| SHEET SIZE A3 | SHEET SCALE: 1:4 |

(1:1)



(LW004) x 2



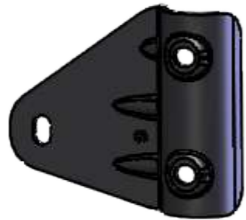
PS054 x 2



LR009 x 2



LR005 x 2



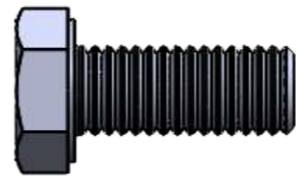
LR006 x 2



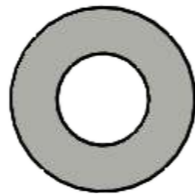
PS425 x 2



FB014 x 6



FS067 x 12



FW021 x 28



FN080 x 10



PS414 x 18



PS065 x 4



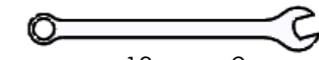
PS419 x 12



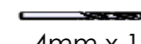
M8 x 100 (FS024) x 2



LR010 x 2



13mm x 2



4mm x 1



9mm x 1



13mm x 1

